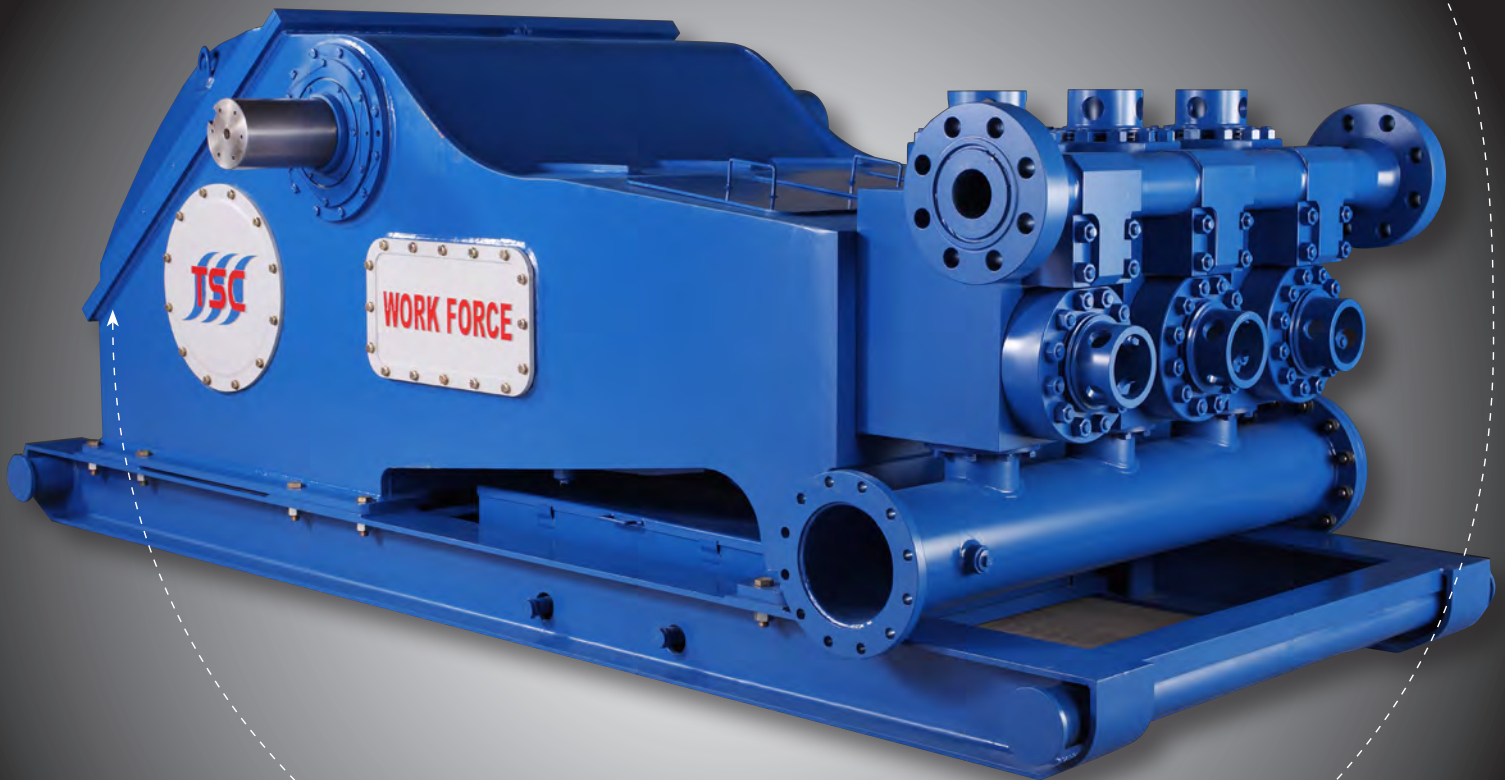


*WORKFORCE TRIPLEX PUMP*  
**WORKFORCE™ WF1600LH Triplex Pump**  
*WORKFORCE TRIPLEX PUMP*



**GLOBAL SOLUTIONS**

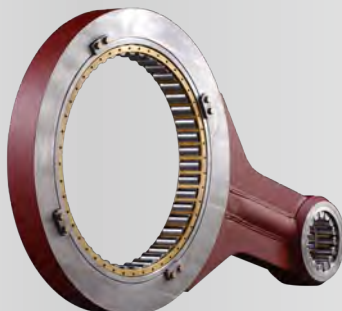
DESIGNING, MANUFACTURING AND PACKAGING FOR THE OFFSHORE INDUSTRY

# WORKFORCE™ WF1600LH



Double-reinforced, 50 Kip high strength, stress relieved, alloy-steel **Pump Frame** provides rigidity where its needed and longevity where its wanted. Heat treatment after fabrication removes residual stress and prevents distortion after final machining.

Forged, welded and heat treated low alloy steel **Connecting Rods** provide optimal operation integrity under continuous load. Fewer welds allow for enhanced durability.



**Super Bolt & Nut** on Main Bearing cap provide significantly higher yield and tensile strength than the standard hex nut and eliminate the need for special tools not commonly available on drilling rigs.

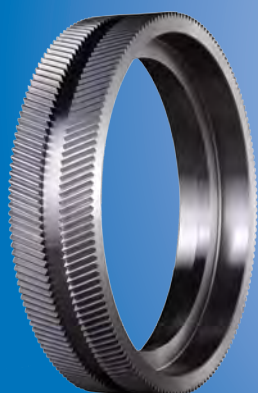
Premium SKF, Timken or equivalent **Bearings** with minimum L10 life of 30,000 hours at rated load.



Ultra compact, lightweight, harmonically balanced and aligned ground up innovative **Design** results in quiet, low vibration performance, lower operating and transport costs, and industry leading power to weight ratio.



Forged and heat treated, high strength alloy steel ANSI 4340, double helix Gear machined to **AGMA 10** & provide longer service life and stronger resistance against chipping under continuous load.



Forged **Pinion** shaft with machined gear made from high strength **ANSI 4340** steel forging for enhanced rigidity and service life.

Forged, balanced, and heat treated alloy Steel **Crankshaft** delivers maximum service life. Bolted components allow for easy repairs and optimal sustainability.



Utilizes common Valve over Valve fluid end modules & components for savings and availability.

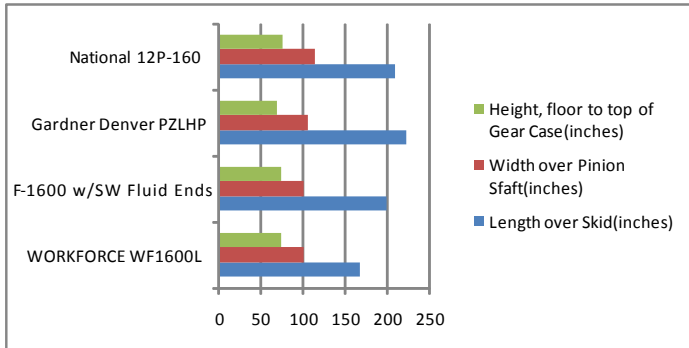


TSC Offshore, Houston, Texas 77086, USA  
T: +1 832 456 3900 E: sales@tscoffshore.com  
Visit our Website at [www.tscoffshore.com](http://www.tscoffshore.com)

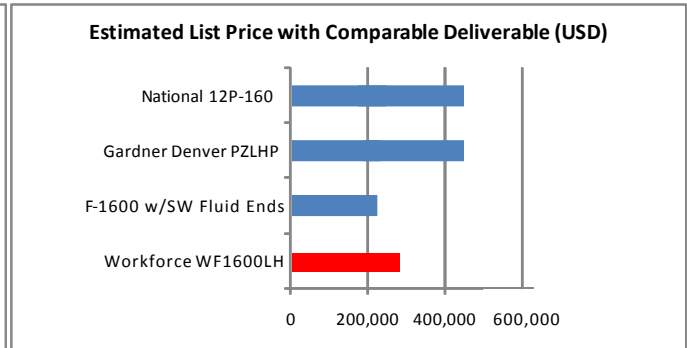
CW Industrial, Alberta Canada  
T: +1 780 986 9695  
E: sales@cw-industrial.net



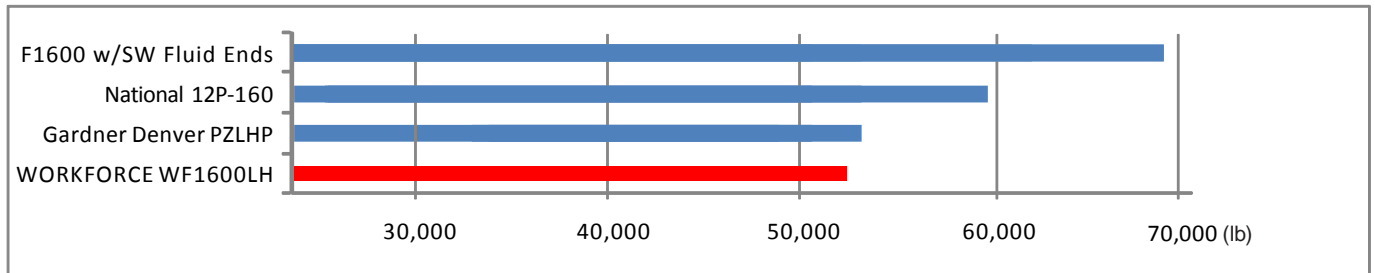
## Why Choose WORKFORCE™?



**Smaller Footprint, More Horsepower**

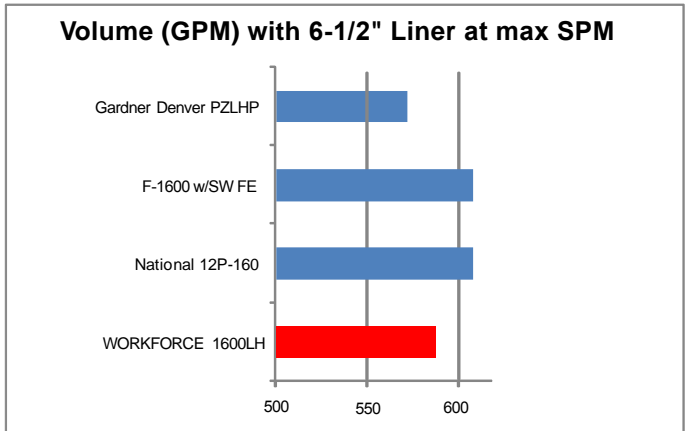
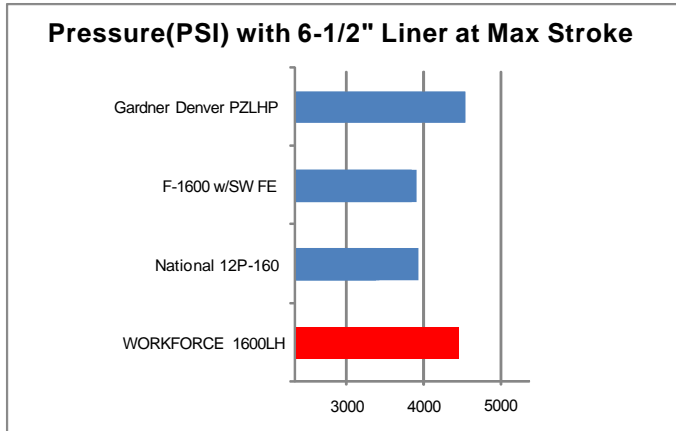


**Lower Cost, Better Value**

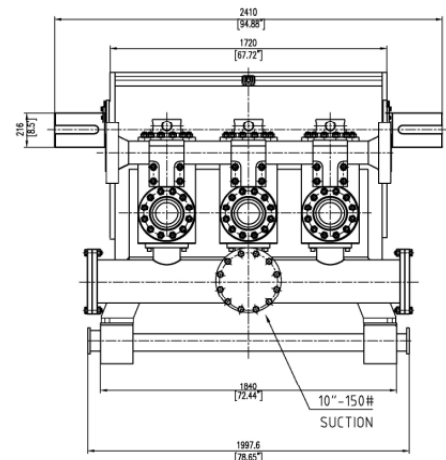
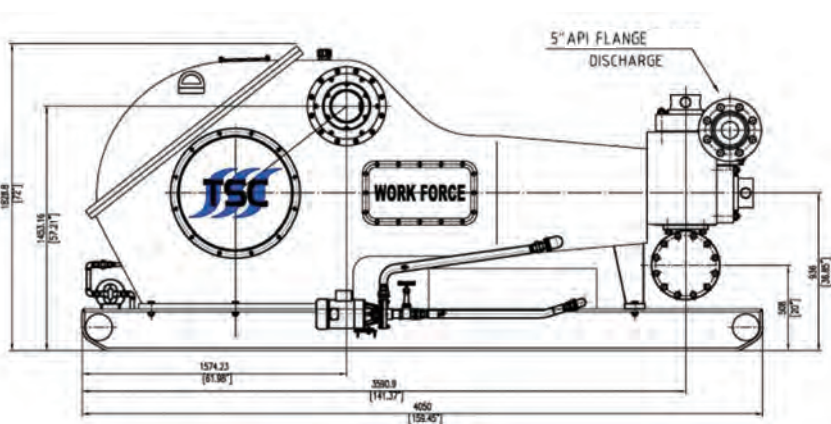


**Lighter Weight. More Robust**

*(Weights shown are operating - with skid, damper, discharge block, lube/liner systems)*



**Balanced Performance, Longer Life**



TSC Offshore, Houston, Texas 77086, USA  
 T: +1 832 456 3900 E: sales@tscoffshore.com  
 Visit our Website at www.tscoffshore.com

CW Industrial, Alberta Canada  
 T: +1 780 986 9695  
 E: sales@cw-industrial.net



## Specifications

Nominal Input Horsepower:	1,600
Maximum Continuous Pinion Torque:	15,180 lb-ft
Maximum strokes per minute:	120
Stroke:	11 inches
Gear Ratio:	4.68
Maximum Piston Diameter & Pressure:	7 inches @ 3,741 PSI
Minimum Piston Diameter & Pressure:	4-1/2 inches @ 7,500 PSI *
Suction Manifold:	10 inch with 150 PSI flanges
Discharge Manifold:	5-1/8 10,000PSI BX169
Weight:	52,029 pounds (include skid) *

\* Weight includes all standard equipment (Skid, Damper, Discharge Block, Relief Adapter, Lube & Liner Wash Systems)

## Performance Characteristics

\* Ratings are based on 90% mechanical efficiency and 100% volumetric efficiency.

WF1600LH Performance Characteristics					Power (HP)	933	1067	1200	1333	1467	1600
					Pinion Ft/Lbs	15,180					
					Pinion RPM	323	369	415	461	507	554
Liner Size (inches)	Max Discharge Pressure				Strokes Per Minute	70	80	90	100	110	120
	Continuous Rating		Intermittent Rating								
	PSI	Mpa	PSI	Mpa							
4.0	7500	51.7	7500	51.7	LPM GPM	477	545	613	681	746	814
						126	144	162	180	197	215
4.5	7500	51.7	7500	51.7		616	705	791	880	969	1058
						159	182	204	227	250	273
5.0	7333	50.6	7500	51.7		742	847	953	1058	1168	1274
						196	224	252	280	309	337
5.5	6060	41.8	6493	44.8		922	1054	1182	1314	1445	1577
						238	272	305	339	373	407
6.0	5092	35.1	5456	37.6		1071	1223	1378	1529	1681	1836
						283	323	364	404	444	485
6.5	4339	29.9	4649	32.1		1257	1435	1616	1794	1972	2154
						332	379	427	474	521	569
7.5	3741	25.8	4649	32.1	1457	1665	1874	2082	2290	2498	
					385	440	495	550	605	660	

\* Refer to SP-WF1600LH-02 for intermittent rating information.

## Standard Equipment

- Premium Brand (SKF, Scheerer or Timken) Bearings
- Forged Discharge Manifold (Not Cast Steel)
- Heat treated, AGMA 10 Gears
- API-6 urethane insert valves & seats
- Forged, Heat treated alloy steel valve over valve fluid end modules (PZL-HP Interchangeable)
- Complete with electric lube & liner wash systems
- Discharge Strainer Cross Assembly
- Pressure Relief Valve Adapter
- 20 Gallon Pulsation Damper
- Oilfield style skid base
- Forged & Heat treated alloy steel frame, eccentric, pinion shaft, & connecting rods

## Optional Equipment

- CPV Shear Relief Valve
- Belt Drive and Sheaves
- Charge Free Damper Conversion
- Hydraulic Seat Puller
- Customer utilized package with diesel or electrical (AC or DC) drive system

